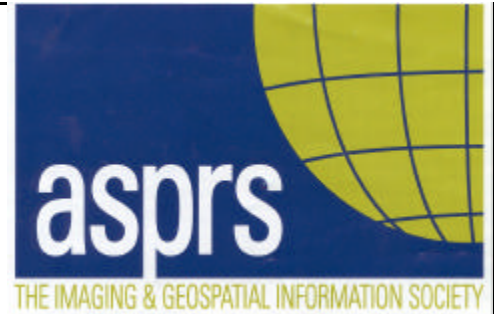


# Columbia River Region NEWS



SEPTEMBER, 2001

2ND Qtr-2001

## AMERICA'S DARKEST HOUR



On behalf of the members of the Columbia River Region, ASPRS, we send our prayers and thoughts to all of the families affected by this tragedy.

I encourage all members to donate blood at your nearest Red Cross Center or make a donation to the Salvation Army.

SPOT satellite image of Manhattan, acquired on September 11 at 11:55 AM EST, 3 hours after two planes crashed into the World Trade Center. The colors result from the use of infrared bands to identify the actual fire hot spots (see red spots near the base of the smoke plume). This was taken with a 20 Meter resolution.

The SPOT satellites orbit at an altitude of 822 km. (over 500 miles)

© CNES/SPOT Image 2001

# INFORMATION EXCHANGE MEETING ANNOUNCEMENT

## Joint Puget Sound and Columbia River Regions Information Exchange

**Invited Keynote Speakers will be  
Discussing the State of the Commercial Satellite Industry  
At Press Time:  
Chesapeake Analytics, Mr. Al Hanks  
Spatial Solutions, Inc.**

**Date:** Thursday, Sept. 27, 2000 **Time:** 9:00-4:30

**Place:** Water Resources Education Center  
Community Room  
4600 S.E. Columbia Way  
Vancouver, Washington

**Cost:** \$25 (full registration includes lunch and notebook)

**Students** \$10 (includes only notebook)

**Website:** <http://www.photogrammetry.com/ASPRS-PSR/exchangesept00.htm>  
(Registration forms download site)

The Puget Sound and Columbia River Regions of ASPRS are having their fifth annual joint information exchange this fall. What is an "Information Exchange"? It's an opportunity for people who are interested in the topics of photogrammetry and remote sensing to learn more about what's going on in our own backyard--in business, academia, and government. The information exchange is a day-long session in which local practitioners can present a 10-minute talk on one of their current or recent projects. A slide projector, PC-projector, and overhead projector will be available, but presenters must be concise with their presentations and keep it under 10 minutes to allow everyone to have a chance at the mike. Anyone who wants to share information about some interesting or unusual project in the areas of photogrammetry and remote sensing are welcome; however, no commercial presentations or endorsements are allowed.

In addition to the presentations, each speaker will submit a 1-page description of the project and a 1-page profile of their organization (forms can be downloaded from the meeting website). The 1-page write-ups will be submitted before the meeting and compiled into a notebook for distribution at the meeting. Lunch and the notebook will be included in the registration fee.

Speaker slots will be limited to 20 due to the single-day schedule and an extended time for the invited speakers, so get your requests in early to insure your slot. Of course anyone is welcome and encouraged to come and find out more about what's going on around our regions, even if they don't want to make a presentation. We particularly want to encourage non-members to come find out more about ASPRS. As an encouragement, any new members who joins ASPRS the day of the session will have the registration fee waived. So please invite your colleagues who work in the areas of photogrammetry and remote sensing. In addition, any person or company can sponsor a student by covering the \$10 registration fee, so if you know any students working in the field, please consider sending them to this session to learn more about our industry and society.

You may contact one of the following people for more information or to reserve your speaker slot:

**Puget Sound Region Contact:**

Bob Wright  
GIS Manager  
Washington DNR  
Phone: (360)-902-1586  
Email: bob.wright@wadnr.gov

**Columbia River Region Contact:**

Margo M. Blosser  
Gorge GIS  
Phone: 541.386.9410  
Email: mblosser@gorge.net

**Website:** <http://www.photogrammetry.com/ASPRS-PSR/exchangesept00.htm>  
(Registration forms download site)

**PURPOSE:** Our INFORMATION EXCHANGE helps you find out what types of photogrammetry, mapping, GIS, and remote sensing projects are occurring in the Puget Sound and Columbia River Regions; who is doing projects, and what approaches are being used to solve problems. If you'd like the opportunity to present a project your company/institution is currently working on, simply fill out the **PROJECT** and **COMPANY** fact sheets (available from the meeting website listed above) and return them with your registration form. They will then be included in the meeting notebook. The focus is on interesting problems, not advertising commercial capabilities. Speakers will deliver a 10 minute overview of any project they feel would be of interest to the ASPRS membership.

Fees cover costs of meeting rooms, lunch, and publishing and distributing the conference notebooks.

(Continued from page 2)

**REGISTRATION FORM**  
**\*\*\* REGISTRATION REQUIRED BEFORE SEPTEMBER 17, 2001\*\*\***

Name: \_\_\_\_\_

Company: \_\_\_\_\_

Address: \_\_\_\_\_

Zip/Postal Code: \_\_\_\_\_

Phone: \_\_\_\_\_ FAX: \_\_\_\_\_ Email: \_\_\_\_\_

Registration:           US\$ 25.00 Full Registration (includes lunch and notebook)  
                            US\$ 10.00 Student (includes notebook, but not lunch)

Make checks payable to "ASPRS Puget Sound Region" and mail together with this form to:

**Hans-Erik Andersen**  
6823 26<sup>th</sup> Ave. NE  
Seattle, WA 98115  
Phone: (206) 543-0827  
FAX: (206) 685-3091 Email: hanserik@u.washington.edu

**ASPRS INFORMATION EXCHANGE PROJECT FACT SHEET**  
**Vancouver, Washington September 21, 2000**

Speaker: \_\_\_\_\_

Company/Institution: \_\_\_\_\_

\_\_\_\_\_

Topic: \_\_\_\_\_

\_\_\_\_\_

Abstract: (less than 200 word) \_\_\_\_\_

\_\_\_\_\_

\_\_\_\_\_

\_\_\_\_\_

\_\_\_\_\_

\_\_\_\_\_

\_\_\_\_\_

\_\_\_\_\_

\_\_\_\_\_

\_\_\_\_\_

\_\_\_\_\_

**CRR-ASPRS PRESIDENT, DOUG SMITH  
DAVID C. SMITH & ASSOC.**

Summer break is over and our organization is now gearing up for our fall, winter and spring activities.

As a first item of business, I would like to commend our newspaper editor Jackie Olson on her efforts in getting our region web page up and running. Summer is a difficult time to get anything done in a volunteer organization and Jackie did a great job!

*(Publisher's Note: As of press time, the URL had not been assigned. A separate email will give access information.)*

We plan to use the web site as an on-going forum for posting information both on Columbia River Region activities as well as a variety of other issues and events that are of interest to our membership. The web site represents a great opportunity to convey information and it will continue to evolve, so please feel free to offer your suggestions and input.

At the top of our region's fall agenda is the annual Technical Exchange Meeting which will take place September 27<sup>th</sup> in Vancouver. This will be a joint meeting with the Puget Sound Region. The details for this event are published in this newsletter and are also posted on the web site. I would encourage everyone to take the time to participate in this meeting. This is a great opportunity to get together with our colleagues in the Puget Sound Region and compare notes on the latest applications of new technologies in our industry.

Planning is now underway for the Columbia River Region (CRR) annual dinner meeting. This meeting is typically held in late January. Last year's meeting was held at the Oregon Museum of Science and Industry (OMSI). The time, place and keynote event for this year's annual meeting have not yet been finalized. If you have any suggestions or input, please contact me or one of the region board members. Details on the annual dinner will be posted on the web site as soon as they are available.

Planning is also underway for the annual GIS in Action conference which will be held next Spring. Tentatively, the 2002 conference is slated for the first part of April at the Lloyd Center Double Tree Hotel. Last year's conference was also held at the Lloyd Center Double Tree and we received very positive feedback on the facilities. Final dates and additional details for the Spring conference and associated events are due to be published soon. Information and links to the conference web page will be posted on our region's web site as soon as they are available.

For those who are not familiar with the spring GIS in Action conference, the conference is hosted jointly by the Columbia River Region ASPRS and the Oregon/Southwest Washington Chapter of URISA. The conference has been an annual event for nine years. Proceeds from this conference have allowed us to establish and maintain a very stable scholarship fund, which is now very near a point where it will be self-sustaining on a long term basis.

Last year's conference was very successful, with an overall attendance of exhibitors, speakers, conference attendees and workshop participants nearing 400. We received very positive feedback on the conference venue and overall program and are looking forward to an equally successful event this year. The conference format will be similar to past events and will include an evening social, vendor's exhibits, technical workshops, a plenary session and technical breakout sessions. Past conferences have typically included a golf tournament and other social events as well. The conference program is currently in the early stages of planning and the planning committee is still looking for input on the program as well as people who are interested in presenting a workshop, moderating a session or making a presentation.

Now is a great time to get involved with this professional organization. As we are just now in the planning stages of next year's activities, this is a great opportunity to become involved in your local chapter of the ASPRS. If you want to get involved with any of the upcoming events we have planned, or if you have any suggestions or input for additional activities you would like to see the organization sponsor, please contact me or one of the board members.

**THE EDITOR'S CORNER  
JACKIE OLSON, USGS**

Catch us on the Web! CRR's site is up and running. Here you'll find news of ASPRS and other regional activities, the region board members, links to our student chapters and all the ASPRS national pages. Future newsletters, and past issues, will be distributed through the site, a move that will bypass some of the problems of emailing large documents. Those members who do not have access to email or the Internet will still receive a paper copy. We have a list for this mailing; if you want your name removed, send a note to the editor. An announcement will be sent by email as newsletters or other items of interest are added to the site.

The Information Exchange Meeting is coming September 27<sup>th</sup> to the Vancouver Water Resources Center. The invited keynote speakers (at press time) are Mr. Al Hanks of Chesapeake Analytics, and Spatial Solutions, Inc., discussing the state of the commercial satellite industry. If you haven't attended before, this is an opportunity for members and guests to present work focusing on technical issues. Details will follow by email. For information on the program or to register to present or to attend contact Margo Blosser at [mblosser@gorge.net](mailto:mblosser@gorge.net) or Bob Wright at [bob.wright@wadnr.gov](mailto:bob.wright@wadnr.gov). Register by September 17<sup>th</sup>.

GIS in Action continues to be the region's success story. URISA and ASPRS sponsor this annual conference on GIS. Held in the midst of some diverse NW weather (from 90-degree heat to pouring rain in two days), it showcased some of the emerging topics in the mapping sciences. The program began with a keynote address by Xavier Lopez of Oracle Corporation and finished with a rousing mixed session of application demonstrations, social hour, and prize drawings. A sampling of topics: One which continually evolves and presents diverse approaches and goals is Internet dissemination of data and mapping; another session presented a variety of viewpoints on the emerging issue of surveying law (in light of current Oregon and Washington statute activities) and certification of GIS and photogrammetry professionals. Planning for next year's program is underway, suggestions for topics can be forwarded to the editor.

One of the most popular application demonstrations was delivered by middle school students working on an inventory of street trees in Portland. The students used GPS, door to door contacts to gather their information, plus Arc-View to present their findings.

There were a large number of prizes donated by the vendors, many thanks to them for their generous support of this event and their contributions to its success. The grand prize, donated by many of the vendors, was a Compaq computer, won by a conference participant who then had to figure out how to get it home on his bike. We noticed that many of the recipients generously donated their prizes to the middle school students who had to leave early.

Guest writers wanted: This is an opportunity for open involvement of members with the newsletter. We're looking for people who want to contribute articles on some aspect of the profession: technical, educational, project-oriented, or coverage of a professional event. The format is 500 words or less, and should include a short introduction of you, the writer. Graphics can be included, keeping in mind the limitations of a single page. If you are interested, contact the editors and we'll get the ideas rolling.

Columbia River Region continues with our dollar-matching contribution to building fund donations. Donations to the fund through the rest of this year are matched 1:1, and then forwarded to the national level. The support of members has enabled the mortgage on the building to be decreased substantially. If you can contribute, send your check, payable to the Columbia River Region, ASPRS, to Chris Aldridge, c/o Spencer B. Gross, Inc., 13545 NW Science Park Drive, Portland, OR 97229-5457.

*(Continued on page 6)*

## OREGON STATE UNIVERSITY STUDENT CHAPTER JEFF HOLLENBECK

05 May 2001

Activity update for the Oregon State University, Student Chapter of ASPRS.

The OSU-ASPRS group has been active these past several months. We have increased our student membership, held numerous meetings and presentations, developed a web site, organized a workshop and even a field trip.

We are actively recruiting both graduate and undergraduate student members. Several ideas for attracting undergraduate members were suggested during a recent meeting. We have an unofficial goal of attracting and maintaining some level of participation by under-graduate student members. Scholarships, such as those offered by the Columbia River Region, resume/ curriculum vitae building, and professional interaction were identified as major attractants. Our graduate student and faculty involvement continues to increase as we become established in the campus community.

Here is a summary of our activities over the last several months:

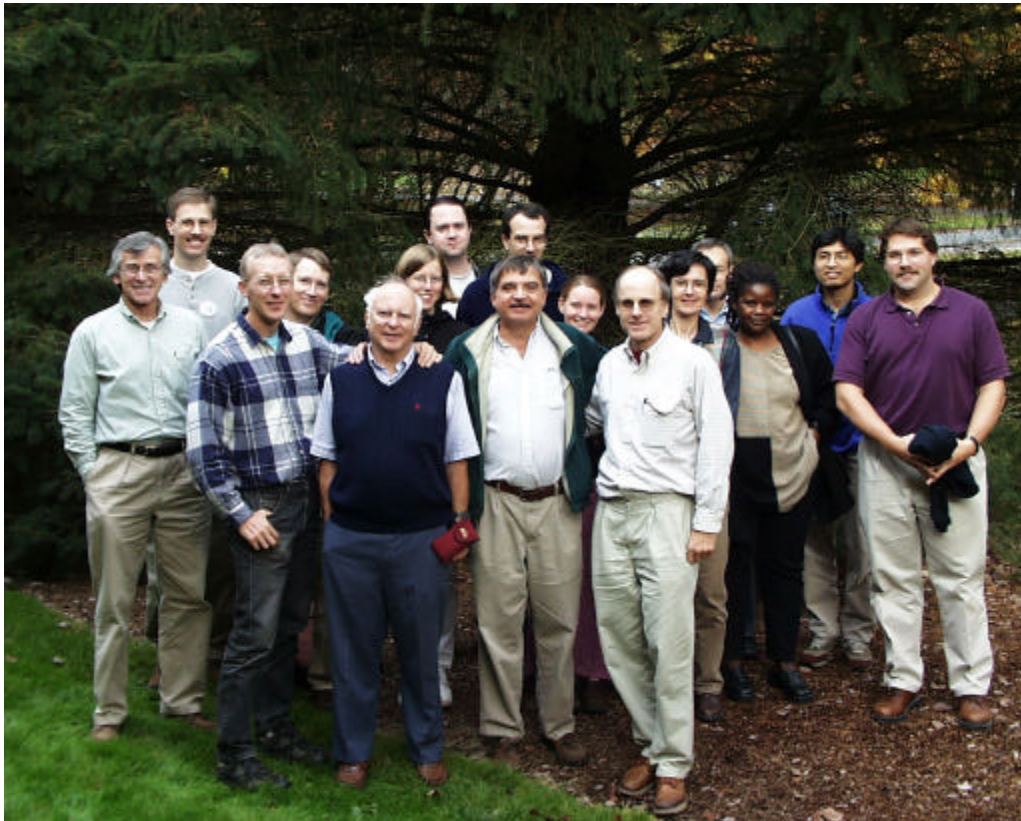
Dr. Joe Means, of the Forest Science Lab at OSU, gave us a presentation about LIDAR and its use in measuring forest characteristics.

Dr. Ralph Kiefer was invited to speak for us last fall where he presented some of the recent innovations of remote sensing. Among the audience of roughly 40 were several mentors and students that have been active in the photogrammetry, remote sensing and GIS fields (see accompanying photo). Audience members were offered a chance to talk further with Dr. Kiefer during lunch, after the presentation.

The chapter organized a field trip to visit Pacific Meridian Resources, Portland during February 2001. We had roughly 12 people participate and was a great experience for our members. We are thankful to the friendly people at Pacific Meridian Resources for taking the time to show around their operation. We were also able to stay and socialize with the Pacific Meridian Resources folks after the tour.

The chapter has also planned a visit by Cy Smith, State of Oregon GIS Coordinator. Cy will (tentatively) speak about the planned organization and availability of GIS data in the coming years.

Perhaps most importantly, the OSU-ASPRS student chapter now has a web presence. Our new web site is located at <http://terra.geo.orst.edu/users/asprs/>. The site includes information about the student chapter and national organization of ASPRS, a schedule of planned activities, photos and descriptions of past events, access to officers, and even an on-line membership application. We welcome visits and suggestions for further improvement of our site.



Some of the mentors and students attending the lecture by Dr. Kiefer, including Dr. Bill Ripple, Dr. Ward Carson, Dr. J. Kimmerling, Dr. Mike Wing and their students.

(Continued from page 4)

We must be coming up on Fall as the conference season is warming up; check out the list in the calendar. Many seminars and brown-bag sessions also begin now. If you know of any we've missed, send a note to the editor. The CRR calendar web page holds links to many of these organizations and their meeting schedules.

## CALENDAR: 2001 - 2002

### SEPTEMBER 2001

#### September 18-20:

GIS in the Rockies; Denver, CO  
Co-sponsored by ACSM, ASPRS, GITA, PLSC, and URISA; "Convergence of Information & Geography for Everyone"

Keynote: Karen Siderelis, Geographic Information Officer (GIO) of the US Geological Survey. GIS as part of Information Technology;  
Denver and the Front Range and Rocky Mountain; presentations for people at all levels.  
<http://www.GISintheRockies.org>

#### September 28:

Portland Area GIS User Group Meeting  
Host: Cowlitz County, Longview WA. Details to follow.  
<http://www.orurisa.org/sigda/upcoming.htm>

### OCTOBER 2001

#### October 3-6:

North American Cartographic Information Society, Annual Meeting, NACIS XXI, Portland, Oregon.  
Practical Cartography  
Day, Oct. 3. Registration and program:  
<http://www.nacis.org/meetings.html>

#### October 10-12:

Northwest ESRI Users Annual Conference; Sun Valley, Idaho. Two days of training will precede the conference.  
<http://www.nwesriusers.org/>

#### October 15-16:

GITA Pacific NorthWest Chapter Fall Conference in Whistler, BC  
<http://www.gita.org/chapters/pacific/pacific.html>

#### October 20-24:

URISA Annual Conference:  
Long Beach, California  
<http://www.urisa.org/annual.htm>

#### Oct. 31-Nov. 2:

ASPRS and MAPPS (Management Association for Private Photogrammetric Surveyors are jointly hosting the "Measuring the Earth--Digital Elevation Technologies and Applications" Specialty Conference; St. Petersburg, Florida.

Program includes focused sessions covering applications, standards, technologies, advanced techniques including LIDAR, IFSAR, SONAR and RADAR; workshops, an exhibit hall and technical tours.

<http://www.asprs.org/st.pete>

### NOVEMBER 2001

#### November 8-15:

Integrating Remote Sensing at the Global, Regional, and Local Scale. The 15th William T. Pecora Memorial Remote Sensing Symposium/Land Satellite Information IV Conference and the ISPRS Commission I (Platforms and Sensors) Symposium: Denver, Colorado.

<http://www.asprs.org/Pecora-ISPRS-2002>  
(ISPRS - <http://www.isprs.org/>)

#### November 8-9:

LSAW GPS Seminar: Renton, WA  
<http://www.plso.org/workshops/GPSClassAd.PDF>

### DECEMBER 2001

#### December 4:

Umpqua Basin GIS Users Group Winter meeting.  
<http://www.orurisa.org/ubug/umain.htm>

### MARCH 2002

#### March 19-23:

Association of American Geographers, 2002 Annual Meeting, Los Angeles, California  
<http://www.aag.org/>

### APRIL 2002

#### April 20-25:

ASPRS Annual Conference; co-hosts: American Congress on Surveying and Mapping (ACSM) and International Federation of Surveyors (FIG); Washington, DC.

<http://www.fig2002.com>

# COLUMBIA RIVER REGION EXECUTIVE BOARD

**NATIONAL DIRECTOR:**

Thomas L. Pagh, CP  
Spencer B. Gross, Inc.  
13545 NW Science Park Dr.  
Portland, OR 97229  
[tom@sbgmaps.com](mailto:tom@sbgmaps.com)

**REGION PRESIDENT:**

Doug Smith  
David C. Smith & Associates  
1734 SE Tacoma  
Portland, OR 97202  
[dsapdx@easystreet.com](mailto:dsapdx@easystreet.com)

**REGION VICE-PRESIDENT:**

Margo Blosser  
Gorge GIS  
423 E. 3rd  
Hood River, Or. 97031  
[mblosser@gorge.net](mailto:mblosser@gorge.net)

**SECRETARY/TREASURER**

Chris Aldridge  
13545 NW Science Park Dr.  
Portland, OR 97229  
[chris@sbgmaps.com](mailto:chris@sbgmaps.com)

**PAST PRESIDENT:**

Sal Kadri  
ValueCAD, Inc.  
2548 SE Ankeny St.  
Portland, OR 97214  
[sal@valuecad.com](mailto:sal@valuecad.com)

**NEWSLETTER EDITOR:**

Jackie Olson  
USGS/WRD  
10615 SE Cherry Blossom Dr.  
Portland, OR 97216-3159  
[jcolson@usgs.gov](mailto:jcolson@usgs.gov)

**REMOTE SENSING EDITOR:**

Ralph Kiefer  
15119 Oyer Dr.  
Oregon City, OR 97045  
[rwkieferr@facstaff.wisc.edu](mailto:rwkieferr@facstaff.wisc.edu)  
[rwkieferr@aol.com](mailto:rwkieferr@aol.com)

**STUDENT CHAPTER ADVISOR:**

Michael Wing  
541-737-4009  
Oregon State University,  
Corvallis, OR  
[michael.wing@orst.edu](mailto:michael.wing@orst.edu)

**STUDENT CHAPTER ADVISOR:**

Art Benefiel  
541-383-7703  
Central Oregon Community College  
Bend, OR  
[a.benefiel@cocc.edu](mailto:a.benefiel@cocc.edu)

**NATIONAL DIRECTOR, TOM PAGH**

This last summer has been very busy for everyone. So busy, in fact, that this happens to be the newsletter scheduled for the second quarter of the year. Now that summer is over, we will be doing our best to get back on track and publish two more newsletters before the end of the year. Our Editor in Chief, Jackie Olson, has been spending a lot of time getting our Web page up and running. Thanks Jackie, for all your hard work. I know its been frustrating.

I will be sending out an email as soon as the actual link is set up by National. Once the link is established, this newsletter, plus future newsletters will be posted and can be read online or downloaded.

The scholarship committee is finishing its selection and the results will be announced this fall at the Information Exchange Meeting. The committee was somewhat disappointed by the low number (3) of entries. All were for the

graduate level, none in undergraduate studies. While it's quite possible that students no longer need money for school (unlikely), the other perks are worth the application, and listing the award on a resume never hurts. For members who teach or mentor students or know of any who are interested in pursuing studies in imaging and geospatial science fields, encourage them to apply next winter. For each of two winners (one undergrad, one graduate), the award is \$1000, free registration to GIS in Action, and a one-year student membership fee. A long-term financial investment has enabled the region to increase the scholarship from previous years.

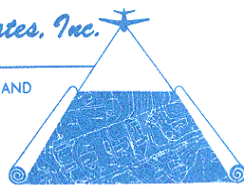
On a personal note:

GOD BLESS AMERICA!

*David C. Smith & Associates, Inc.*

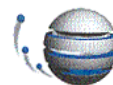
PROFESSIONAL PHOTOGRAMMETRISTS AND  
DIGITAL MAPPING SPECIALISTS

1734 S. E. Tacoma  
Portland, Oregon 97202



**DAVE SMITH, P.L.S., CP**  
President

Bus. (503) 232-5285  
Fax. (503) 230-9052  
Res. (503) 774-1769



**TITAN SYSTEMS CORPORATION**


EVERSTAR GROUP

**ROGER E. CRYSTAL**  
GIS Site Manager

4099 SE International Way, Suite 206  
Portland, OR 97222-8853  
Email: [roger.crystal@titan.com](mailto:roger.crystal@titan.com)

Tel: (503) 794-1344 x116  
Fax: (503) 794-1350

# THANKS TO OUR SPONSORS




**Sal Kadri**

- AutoCAD, MicroStation - Drafting, As-Built
- Scanning, CAD Conversion, Digitizing
- CAD, GIS, AM/FM, EDMS

2548 S.E. Ankeny St.  
Portland, OR 97214  
email: [sal@valuecad.com](mailto:sal@valuecad.com)

Ph. (503) 233-8796  
Fax (503) 731-9087




**Carl Zeiss, Inc.**  
61 Inverness Drive East  
Suite 102  
Englewood CO 80112

Kent L. Park

Western Region Sales Manager

Photogrammetry Division

(303) 799-6838  
(303) 799-8159 Fax  
(303) 637-6924 Voice Mail  
[kpark@czi.com](mailto:kpark@czi.com)



**RICHARD GRAVILLE**

P.O. BOX 1118  
CALDWELL, IDAHO 83606-1118  
TEL: 208 454-1344  
FAX: 208 454-1345



**Larry Bergman**

7816 SE 13th Avenue  
Portland, Oregon 97202

(503) 239-6010  
FAX: (503) 239-4637



Aerial Photography  
Aerotriangulation  
Engineering Mapping  
Digital Orthophotography  
Photogrammetric Scanning  
GIS Applications

**Spencer B. Gross, Inc.**  
Photogrammetric Engineering

13545 N.W. Science Park Drive Portland, Oregon 97229  
503•646•1733 FAX 503•626•4818  
e-mail: [info@sbgmaps.com](mailto:info@sbgmaps.com) home page: [www.sbgmaps.com](http://www.sbgmaps.com)

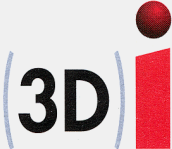


**EAGLE**  
GPS Survey Corporation

**AL HERTEL**

13545 N.W. Science Park Drive  
Portland, Oregon 97229  
(503) 643-1073

The shape of information



3Di, LLC  
3400 West 11th Ave.  
Eugene, OR 97402  
541.343.8877  
(fax) 541.343.8879  
[bhazell@3dillc.com](mailto:bhazell@3dillc.com)  
[www.3dillc.com](http://www.3dillc.com)

Bret J. Hazell  
Regional Director, West Region  
Mapping Services